



## Scheda tecnica indumento/Garment technical data sheet. 8810B.00

Identificazione articolo/Item identification					
Cod. comm.le I. Starter/ IS commercial item code:	<b>8810B</b>	Cod. art. fornitore/ Supplier item code:	<b>8810B</b>	Cod. fornitore/ Supplier code:	<b>101100</b>
Cod. colore I. Starter/ Industrial Starter colour code:	<b>040 (blu avio/avio blue)</b> <b>080 (grigio anthracite/antrax grey)</b>	<input checked="" type="checkbox"/>	Articolo del catalogo/Item from catalogue		
		<input type="checkbox"/>	Articolo personalizzato/Customized item		
Nome articolo/ Item name:	<b>T Shirt BOOM / BOOM T Shirt</b>				
		Codice cliente/ Customer code:	<b>N/A</b>		

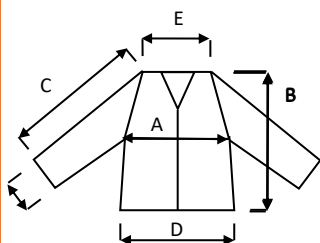
Descrizione tecnica dell'articolo/Technical item description			
	Composizione/ Fabric composition	Colore/colour (Pantone)	Peso del tessuto/ Fabric weight [g/m <sup>2</sup> ]
Tessuto principale/ Shell main fabric:	<b>100% cotone jersey / 100% jersey cotton</b>	<b>Blu avio (inserti nero) / Avio blue (black inserts) / Grigio antracite (inserti nero) / Antrax Grey (black inserts)</b>	<b>160 +/- 5%</b>
Accessori/Accessories:	<b>Taschino frontale, bordino tergisudore al collo / Front chest pocket, neck sweatband</b>		
Loghi e ricami/ Logos & embroideries:			
Taglie/Sizes:	<b>S, M, L, XL, XXL, 3XL</b>		
Imballo/Packages:	<b>n. 1 pz per box , n. 20 box per export carton / n. 1 pc per box , n. 20 boxes per export carton</b>		
Istruzioni lavaggio/ Care label:			

Conformità alle norme CE/Conformity with EC standards		
Cat. DPI/ PPE Category:	<b>I</b>	Norme CE e livelli di protezione/ EC standards and protection levels: <b>EN ISO 13688:2013</b>
Lingue nota Informativa/ Manufacturer's notes languages:	<b>IT,ES,CZ,PL,EN,PT,SK,HU,FR,DE,LT,RS,GR,SI,LV,HR,EE,TR,RO</b>	

## Scheda tecnica indumento/Garment technical data sheet. 8810B.00

	Misure delle taglie/ Size measurements [cm]					
Taglia/Size:	S	M	L	XL	XXL	XXXL
A. Torace/Chest:	100	104	108	113	118	123
B. Lunghezza tot./Back length:	68,5	70	71,5	73	74,5	75
C. Manica/Sleeve:	20,1	20,5	21,2	21,9	22,6	23,3
D. Fondo/Bottom:	98	102	106	111	116	121
E. Spalla /Shoulder:	42,1	43,5	44,9	46,3	47,7	49,1

### Disegno e foto/Drawing and photo



Vicenza, 23/11/2023

Resp. acquisti/Purchasing manager